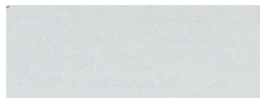


# Standölfarbe

deckende Holzanstriche für den Innen- und Außenbereich,  
besonders auch für die Denkmalpflege



Anstrichaufbau Standölfarbe weiß  
Grundieröl - Zwischenanstrich - Schlußanstrich



silber



gold



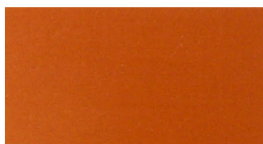
gelb



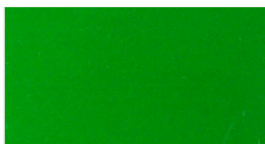
orange



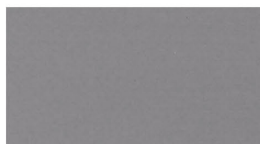
ocker



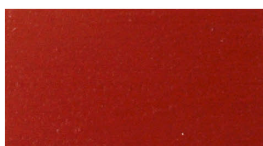
englischrot



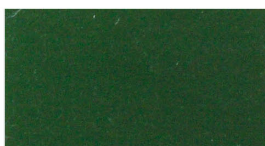
grün



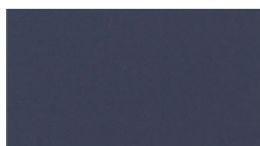
taubenblau



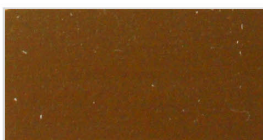
oxsenblutrot



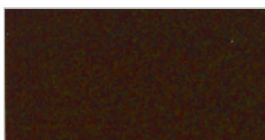
tannengrün



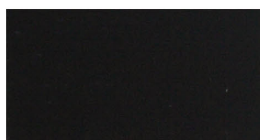
dunkelblau



braun



dunkelbraun



schwarz